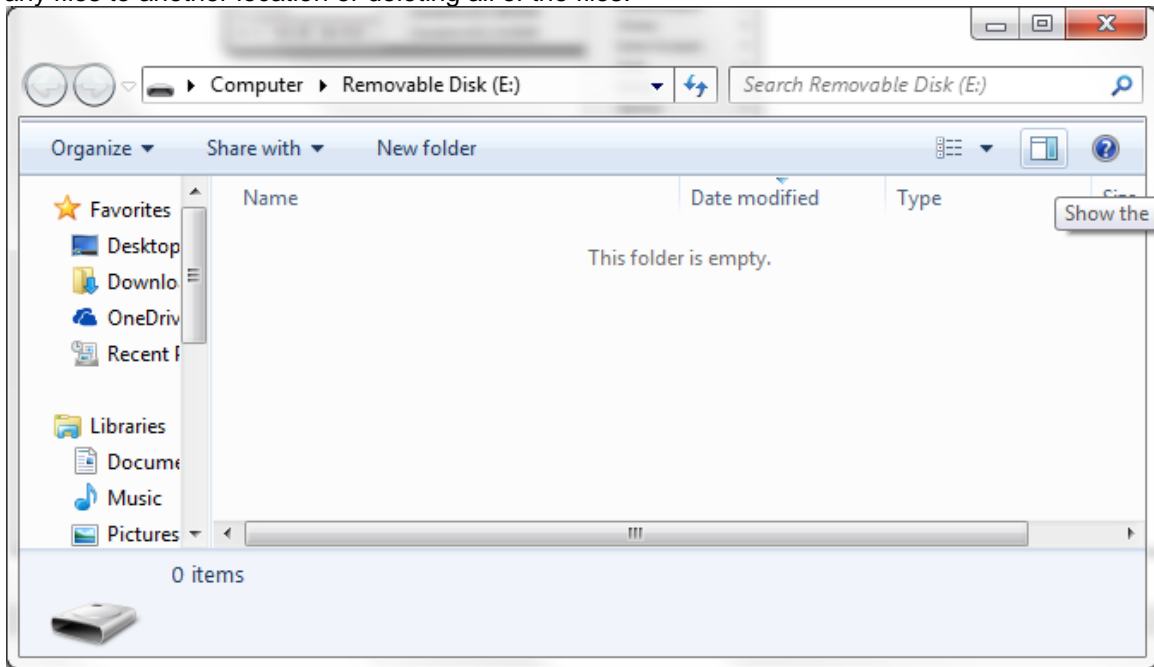




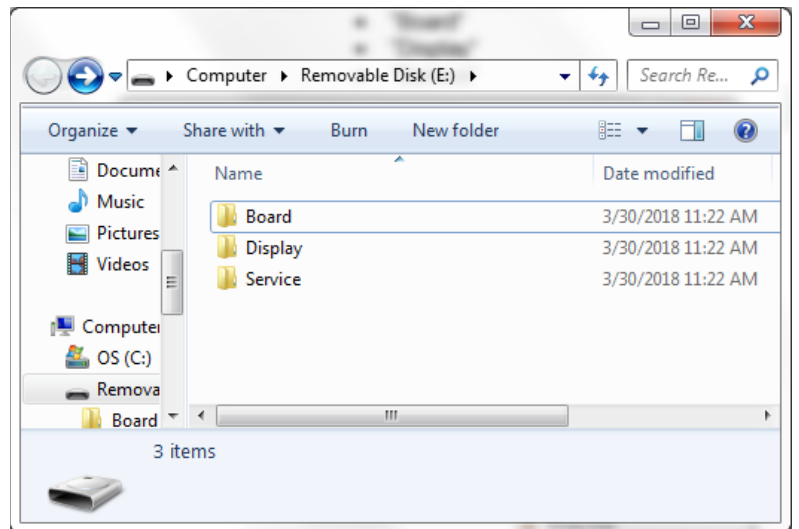
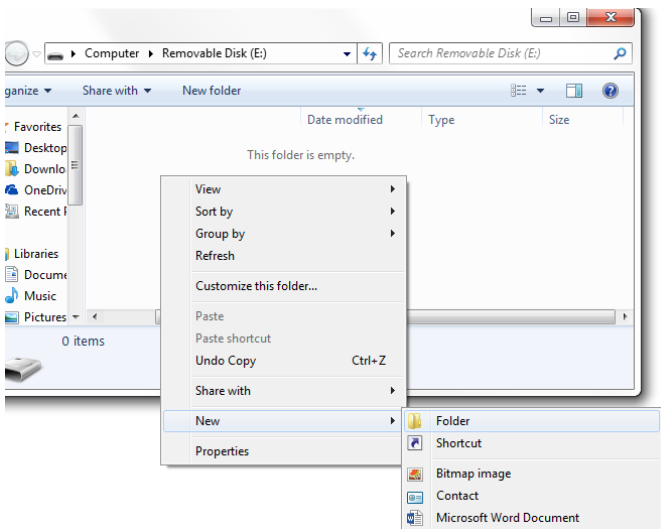
Software Upgrade – June 2018

STEP 1 – Insert a flash drive into a USB port on your computer. Clear the flash drive by saving any files to another location or deleting all of the files.



STEP 2 – Create the necessary folders for uploading to the ION.

- Right click in the file explorer
- Select: New – Folder
- Create three folders named: **Note: Folder names are case sensitive**
 - “Board”
 - “Display”
 - “Service”

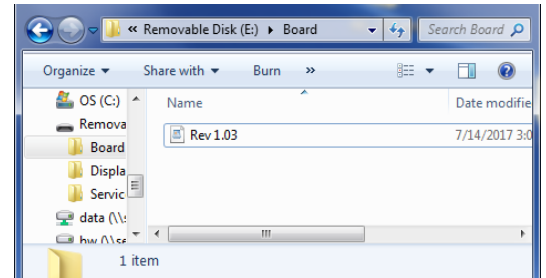




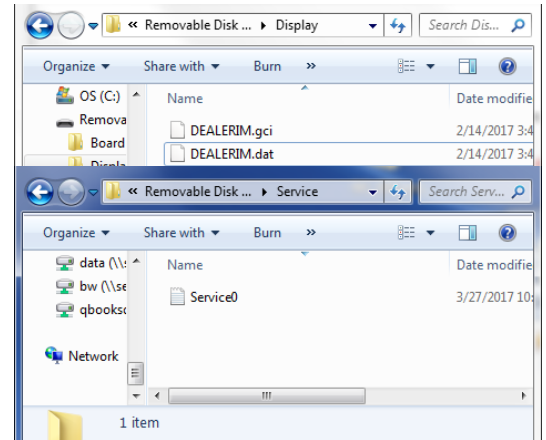
Caution: Flash drive should ONLY have these three folders in the root directory.

STEP 3 – Select the files you want to upload and place them in the appropriate folders.

- “Board” folder: only accepts “.hex” files
 - o Files are available via email, DropBox, or through the Dealer Portal at the Natural Choice website.
 - o Used to update Main Board software
 - o You should see Rev 1.04 in the folder for this update.
 - o After uploading .hex files, ALWAYS remove them from the flash drive to prevent rolling back software revisions on new coolers that are receiving image updates



- “Display” folder: For software update, should be empty.
 - o Due to slow transfer rate between USB port and SD card, it is recommended that the logo file and text file be removed for update.
- “Service” folder: only accepts “.txt” files
 - o Used to update contact info and other text info on display
 - o Save the **Service0.txt** file here to upload to the ION



Note: All files must have manufacturer specified name.

Caution: All files in these folders will be uploaded to the ION. Keep all files you do not want to upload OFF of the flash drive

STEP 4 – Turn off ION and insert flash drive into USB port located inside filter door. Turn ION on to begin upload. When the display changes to the RESTART screen, the upload is complete. Turn off the ION, unplug flash drive, then restart the ION. Your upload is now complete. Check upload of contact info in product info screen. Allow 3 minutes of no use for custom image to appear.

Warning: Loss of power or removing flash drive before completion may result in complete failure of main control board.

