



Natural Choice Corporation
4601 Interstate Blvd
Loves Park, IL 61111
PHONE: 815-874-4444
FAX: 815-874-4445
www.naturalchoicewater.com

TECHNICAL SERVICE BULLETIN

Filename: TSB – Sanitizing the ION Appliance - US
Rev date: 5/18/2020

SANITIZING THE ION APPLIANCE

This procedure is intended to clean and sterilize the interior water path of the ION TS Series drinking water appliance as well as some external contact components

***The 6920 kit from Natural Choice is intended for multiple uses. Parts can be re-used as often as needed, bottle can be refilled with commercially available 70% Isopropyl Alcohol**

NOTICE: Effective sterilization requires at least 15 minutes of contact time

WARNING: TURN HOT SWITCH OFF BEFORE BEGINNING THIS PROCEDURE!

Estimated Time Required: 45 Minutes

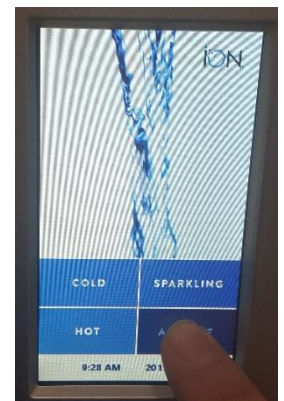
Items Required:

NCC Part #6920
Includes Two (2) Sanitizing Cartridges,
One (1) 8oz Twist-Top Bottle of Isopropyl Alcohol
One (1) spray nozzle attachment
One (1) closed port manifold with stem elbows, One foot of blue tubing
One (1) 3/4" GHT to 1/4" Quick Connect Fitting
One (1) 1/4" in-line shutoff valve
One (1) Microfiber cleaning cloth
Hygiene Stickers (optional- qty per order)



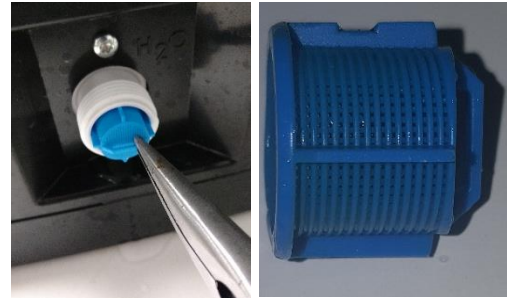
STEP 1 – SHUT OFF WATER SUPPLY

Shut off water supply and relieve pressure by pressing cold or ambient water option. Remove water line from inlet valve



STEP 2 – REMOVE BLUE STRAINER INSIDE INSIDE INLET VALVE & CLEAN

Clean strainer by immersing in Isopropyl Alcohol for approx. 30 seconds. Replace before continuing to Step 3



STEP 3 – REMOVE THE FILTER

Open filter door on front panel of ION and twist filter counter-clock wise. Remove filter and discard

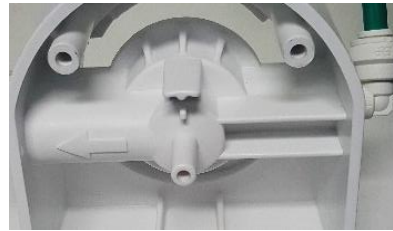


STEP 4 – PREPARE THE MANIFOLD

Connect water supply to inlet port of manifold. Connect one end of blue tubing to outlet port of manifold. Connect other end of blue tubing to fitting on back of cooler

NOTE: Arrow on back of manifold indicates direction of flow

NOTE: Shutoff valve included with kit can be installed before or after manifold if one was not present on install



STEP 5 – PREPARE THE SANITIZING CARTRIDGE

Insert one empty sanitizing cartridge into ION, rotate clock-wise to lock into place

Use twist-top bottle to pour 4oz Isopropyl Alcohol into top of second empty sanitizing cartridge

Insert sanitizing cartridge with solution into manifold outside of cooler. Rotate clock-wise to lock into place. Turn on water supply



STEP 6 – SANITIZING THE WATER PATH

Dispense Ambient water until stream is solid for approx. 5 seconds. Repeat step for Cold and Sparkling water (if present)

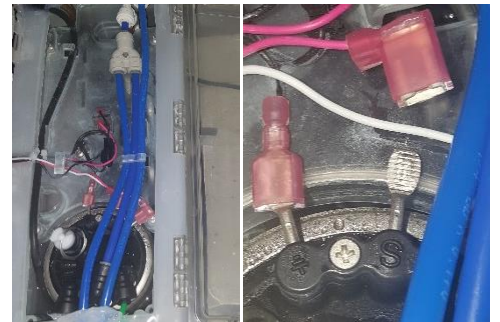


STEP 7 – FILL CARBONATION TANK TO TOP WITH SANITIZING SOLUTION (MODELS 300 & 400 ONLY)

1. Open Ice Tank lid
2. Turn off ION and CO2
3. Disconnect red wire from carbonation tank ("S")

NOTE: Disconnecting red wire simulates the carbonation tank is Empty

4. Put paper towels around the safety valve on carbonation tank
5. Open carbonation tank by pulling the safety valve up and turn valve 90 degrees
6. Turn ION back on. Allow ION to fill carbonation tank until water comes out of safety valve. Quickly close the safety valve and turn off ION
7. Reconnect red wire before continuing



STEP 8 – CLEAN THE FILL VALVE

Drain water from ice tank using the ice tank drain located inside filter door until water level is slightly below the level sensor brackets. Turn ION on and allow water with sanitizing solution fill the remainder of the ice tank



STEP 9 – CLEAN TUBE CONNECTED TO HOT VALVE

Dispense a small amount of water from the hot tank to get solution into short tube between fill valve and hot valve



STEP 10 – 5 MINUTE CONTACT CYCLE

After 5 minutes of sanitizing solution in all ION water paths, dispense a small amount of water from Cold, Ambient, and Sparkling to ensure sanitizing solution contacts all components

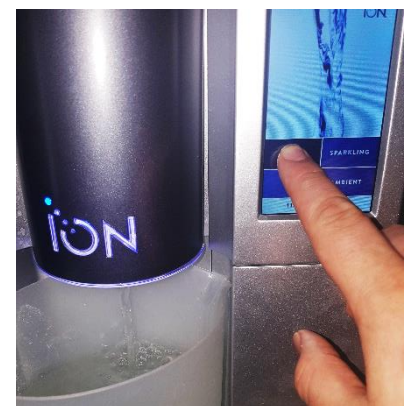
STEP 11 – 10 MINUTE CONTACT CYCLE

After 10 minutes of sanitizing solution in all ION water paths, remove external manifold with sanitizing cartridge from water line. Connect water line to back of ION. Remove internal sanitizing cartridge and drain until empty. Once cartridge is empty, reinstall in ION



STEP 12 - FLUSH ION

Dispense 2 liters of water from Cold, Ambient, Sparkling, and Hot to ensure sanitizing solution is out of ION



STEP 13 – REPLACE FILTER

Once the sanitizing solution is completely flushed from the ION, remove sanitizing cartridge. Spray new filter head with Isopropyl Alcohol by installing spray cap on bottle and insert new filter. Follow filter change procedure



STEP 14 – REPLACE OR SPRAY FAUCET (OPTIONAL)

Use alcohol spray bottle to spray faucet and directly sanitize, or replace faucet if desired

STEP 15 – CLEAN TOUCH SCREEN (OPTIONAL)

If needed, wipe down touch screen using a damp cloth with mild soap and water **ONLY- DO NOT USE CHEMICAL CLEANERS OR ALCOHOL**

Turn power to ION OFF prior to cleaning screen. Ensure screen is completely dry and free of residue before powering on

NOTE: Touch screens and other electronic devices are delicate and subject to damage if improperly used or cleaned. Use caution

END OF PROCEDURE

Not sure if you're doing the right thing?

Contact Natural Choice Corporation at 800-547-7726 (815-874-4444int'l) or by fax at 815-874-4445 or by email at info@naturalchoicewater.com